



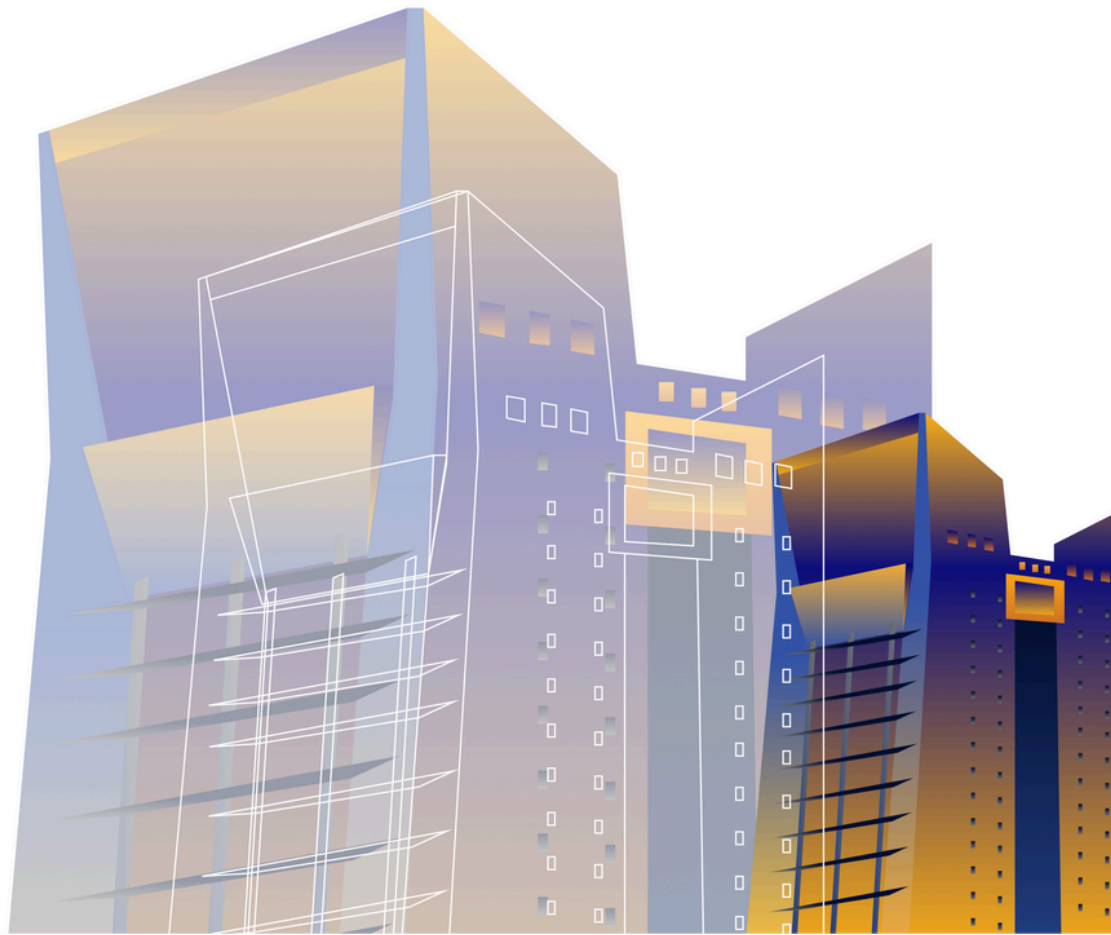
Reduced Inequalities



Sustainable Development Goals Report 2023

“Equality needs to underpin every aspect of sustainability if the objectives of the SDGs are to be met. Although SDG 5 explores this through the prism of gender, SDG 10 takes a broader look at the intersectionality of disadvantages. This disadvantage can be felt through all of the other key issues raised by the SDGs – disadvantaged groups are both more likely to be unable to take advantage of progress and to suffer from the effects of climate change.”

THE Impact Rankings





Reduced Inequalities



Sustainable Development Goals Report 2023



STATISTICS

5,540

Number of students starting a degree

3,454

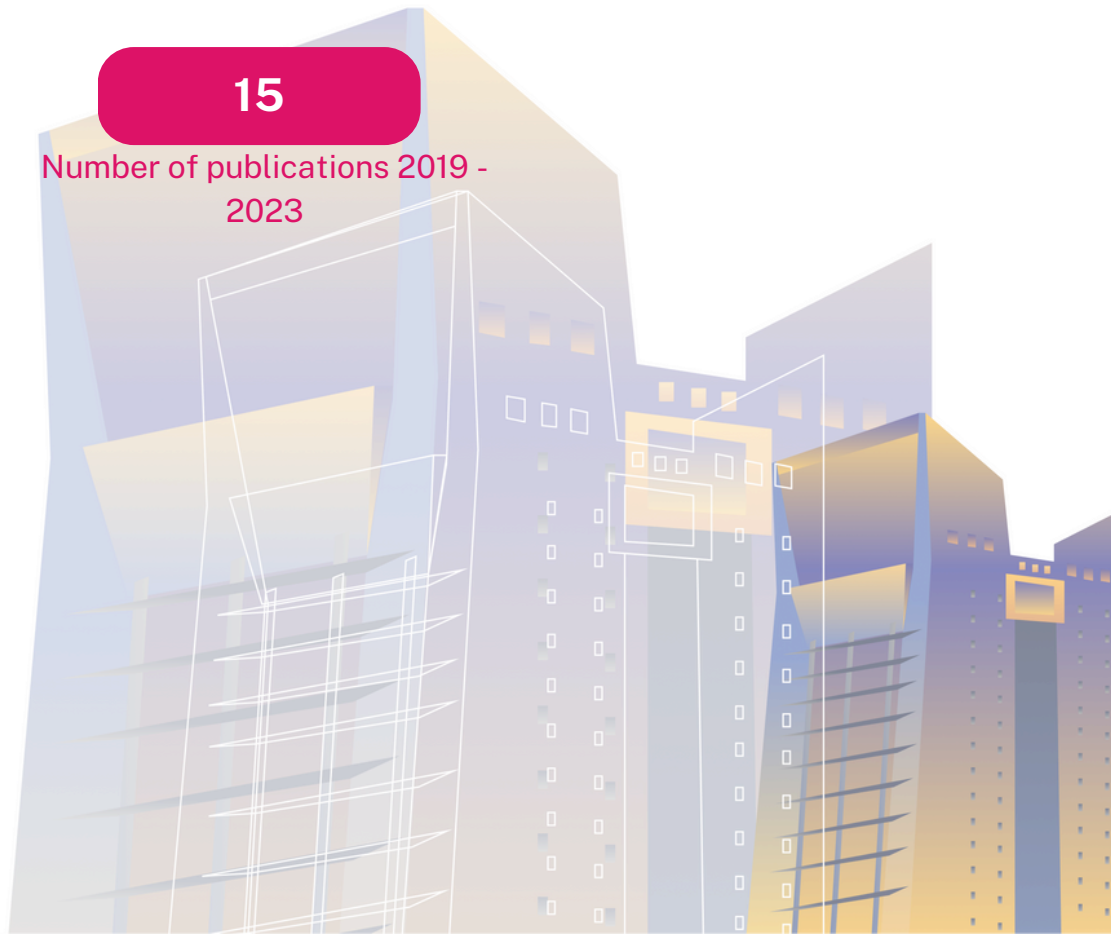
Number of first-generation students starting a degree

822

Number of international students from developing countries

15

Number of publications 2019 - 2023



ITS' Impact on Disability Support: Bridging Campus and Community

ITS has launched three transformative initiatives supporting people with disabilities, demonstrating its commitment to inclusive community development beyond campus boundaries.

The Fake Thousand Hands Movement spearheads technological innovation through open-source 3D-printed prosthetics, creating a nationwide network of support via the Indonesian Tridimensional Printer Association. Their slogan, "I Can't...But We Can, Ayo Gotong Royong," emphasizes collaborative community action, incorporating local prosthetic workshops and free training programs. Meanwhile, The Student Executive Board's "Gebyar Ngopi Komunitas 3.0" program addresses social inclusion by partnering with the Peduli Kasih Foundation, engaging special needs children in creative activities and public performances. This initiative effectively builds confidence while challenging societal perceptions. Complementing these efforts, the Global Partnership Directorate connects international students with the disabled community through Istana Karya Difabel (IKD). This program combines cultural exchange, performance arts, and economic empowerment through MSME support, creating a comprehensive approach to community integration.





ITS' Comprehensive Scholarship and Financial Aid Program: Ensuring Educational Access for All

ITS committed to support underrepresented groups through an extensive scholarship and financial aid program. In a remarkable achievement in 2023, ITS has successfully established partnerships with 11 new scholarship providers, bringing the total to 53 donor institutions, benefiting 6,361 students with a substantial total funding of Rp 83.68 billion.

The funding structure spans seven strategic categories:

1. Government ministries and institutions leading at Rp 76+ billion.
2. Additional support comes from regional governments (Rp 1+ billion),
3. State-owned enterprises (Rp 2+ billion),
4. Private sector partners (Rp 1+ billion),
5. Foundations (Rp 1+ billion),
6. Dedicated contributions from ITS alumni and
7. The ITS Endowment Fund Management Institution (LPDA-ITS), each providing over Rp 400 million.

Complementing these scholarships, the IKOMA-managed UKT Assistance Post program offers crucial support for students struggling with tuition fees. This initiative ensures that immediate financial challenges don't derail students' academic journeys.

BEASISWA SCHOLARSHIP
PT. JAYA OBAYASHI

PENDAFTARAN
1 APR 2023 - 31 OCT 2023

BENEFIT

- UANG SAKU Rp. 2.000.000,- /Orang Sampai Dinyatakan Lulus (Maksimal 24 Bulan)
- Jaminan Langsung bekerja Di JAYA OBAYASHI (Iktan Dinas Selama 5 tahun)

PERSYARATAN UMUM

- Curriculum Vitae
- Mahasiswa S1 (Elektronik, Arsitektur, Mechanical & Elective)
- Belum Menikah
- KTP/KK/Kartu Mahasiswa
- Mahasiswa Minimal Semester 5
- Tidak Sedang Menemuka Beasiswa lain (Surat Rekomendasi Dari Dekan Terkait)
- Mengisi Formulir Pendaftaran
- Minimal IPK 3.000.00 Dilampirkan Transkrip Nilai
- Serifikat Keahlian (Jika Ada)
- Foto Terbaru
- Surat Pernyataan Bertanggung Jawab Dari Orang Tua
- Surat Keterangan Sehat Dari Rumah Sakit
- SKCK Dari Kepolisian

LINK PENDAFTARAN
<https://bit.ly/JOscholarship2023>

PT. Jaya Obayashi | www.jayaojayashi.co.id | Jl. Pancoran Timur 2 No. 3 Pancoran Jakarta Selatan

its.ac.id/kemahasiswaan
CALL CENTER: 082245493201

BSI BANK SYARIAH INDONESIA | BSI MASLAHAT | BSI SCHOLARSHIP

OPEN REGISTRATION

2023

Beasiswa untuk Mahasiswa Tingkat Akhir

BSI SCHOLARSHIP TALENTA

Buat kamu mahasiswa yang ingin berkarir di dunia ekonomi syariah, jangan lewatkan kesempatan ini!

Daftar Segera!

SCHOLARSHIP BRIGHT

Dibuka hingga 01.10.2023

memberimakna.id

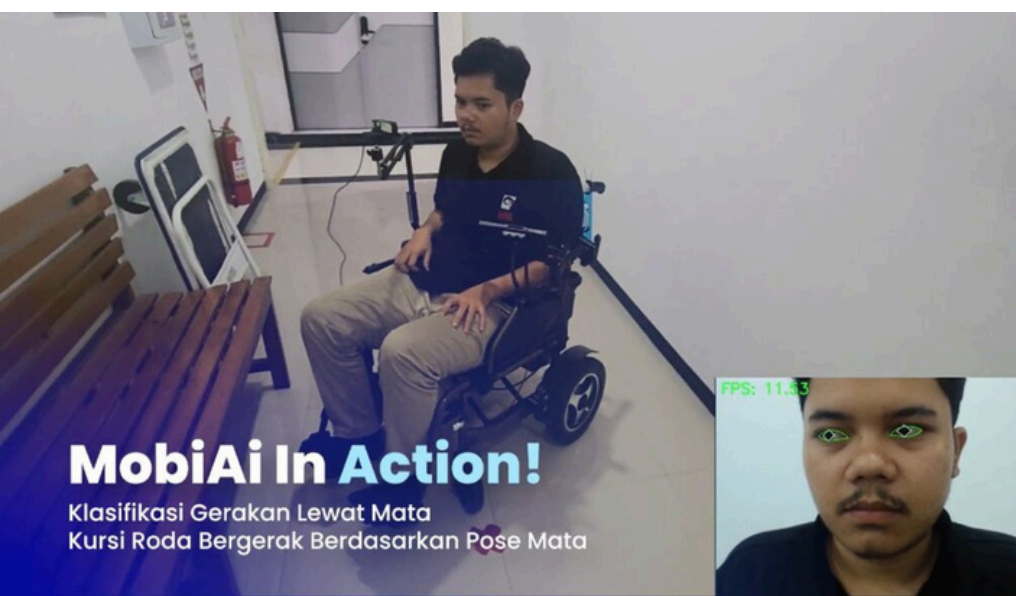
its.ac.id/kemahasiswaan
CALL CENTER: 082245493201

Pioneering Disability Empowerment: ITS' Comprehensive Approach to Inclusive Technology

ITS is at the forefront of disability empowerment through innovative technological solutions that address social inclusion, economic accessibility, and political awareness. Firstly, ITS' computer engineering students revolutionized mobility assistance with MobiAi, an eye-controlled wheelchair designed for individuals with severe motor limitations, including those affected by ALS and elderly individuals. Second, the "Sambal Telur" team integrated CNN algorithms and IoT capabilities, enabling autonomous movement through eye control while incorporating a sophisticated patient tracking system. This innovation effectively breaks down physical barriers while maintaining essential monitoring capabilities for caregivers.

Building on this momentum, ITS graduate students developed SMILE, an AI-powered system that transforms traditional physical therapy into engaging games. This innovative approach tackles both rehabilitation needs and cognitive development for children with special needs while reducing long-term therapy costs. Securing IEEE EPICS funding demonstrates how academic innovations can attract international resources for sustainable disability support programs.

ITS further expanded its impact through a wireless bookshelf project at YPAC Surabaya's Special Education School, which addressed fundamental literacy access rights. This community service initiative, developed by 20 students, enables independent access to educational resources through remote-controlled technology while incorporating holistic development activities like clay modeling and tote bag painting to foster motor skills and creativity. These collective initiatives mark significant progress toward a more equitable society, creating better opportunities for development, education, and social integration for individuals with disabilities.



ITS' Comprehensive Framework for Equal Opportunities and Anti-Discrimination

ITS integrated approach to ensuring equal opportunities and reducing inequalities lies in the Declaration Against Slavery and Discrimination. This document explicitly rejects all forms of discrimination based on gender, age, ethnicity, religion, and social status, establishing human dignity as a fundamental principle that transcends social boundaries. This foundational document, combined with comprehensive anti-discrimination measures, sexual violence prevention, and global protection protocols, creates a thorough framework where every individual's worth is recognized and protected.

The Sexual Violence Prevention and Handling Task Force (Satgas PPKS) serves as a cornerstone of this framework, responding to the concerning statistic that university environments account for 35% of cases against women in Indonesia. ITS implements a dual approach to prevention and response, featuring educational programs, multiple reporting channels, and comprehensive support services. The institution's nine-step reporting process ensures confidential case handling while maintaining accessibility through various reporting channels.

This framework represents ITS vision for an academic environment where every individual can thrive free from discrimination. It sets a standard for how educational institutions can contribute to building a more equitable society while preserving their cultural integrity and values. The institution's comprehensive approach ensures that every community member can pursue their academic and professional goals, supported by robust institutional structures that actively work to reduce inequalities of outcome.

