



國立中山大學  
National Sun Yat-sen University

# STUDENT HANDBOOK 2020

FALL SEMESTER



INTERNATIONAL GRADUATE PROGRAM  
OF EDUCATION AND HUMAN DEVELOPMENT

# WHAT IS IGPEHD?

The International Graduate Program of Education and Human Development (IGPEHD), located in southern Taiwan, offers both master's and doctoral programs for international students who aspire to work in the field of education.

Our students come from all around the world. Currently our doctoral students are from Vietnamese, the Philippines, Indonesia, and the United States. They come here to seek further academic qualifications and better opportunities in their academic life.

In 2020, we also opened a master's program for students who wish to work as educational practitioners.

If this sounds like you, then IGPEHD is your best choice. You are welcome to join us and start your new chapter.

# MASTER PROGRAM

<b>Award</b>	MA in Education	
<b>Start date</b>	September 2020	
<b>Duration</b>	1 to 4 years full time	
<b>Admitted Number</b>	5 students	
<b>Graduation Requirements</b>	Credit points	27 (including 3 credit points of Research Methods)
	Academic article	Presented in a conference (either poster or oral)
	Thesis oral defence	Pass at least 70 out 100 points
	Thesis defence	Pass at least 70 out 100 points
<b>Further Study to PhD</b>	Fast track	Study in the MA Program for one year for being eligible to apply for IGPEHD Doctoral Program
	Scholarship	NSYSU International & Elite scholarships

<b>Award</b>	PhD in Education		
<b>Start date</b>	September 2020		
<b>Duration</b>	2 to 7 years full time		
<b>Admitted Number</b>	5 students		
<b>Graduation Requirements</b>	Required credit points		30 (including 3 credit points of Research Methods)
	Choose one	Academic article	Published in a peer-review journal (under SSCI, SCI or A&HCI) as the first or corresponding author
		Qualifying exam	Pass at least 70 out of 100 points
	Academic article		Published in a peer-review journal
	Thesis proposal defence		Pass at least 70 out of 100 points
	Thesis defence		Pass at least 70 out of 100 points

# DOCTORAL PROGRAM

# ENTRY REQUIREMENTS

## Eligibility



01

### Nationality

We only accept international students for now. Applicants holding Taiwanese (ROC) passports will not be considered.



02

### Academic background

Not specifically required. You may apply out of the interest in education and human development.

03

### Prerequisite courses

No prerequisite courses are required.



# ENTRY REQUIREMENTS



## Eligibility

04



### English language requirements for non-English speakers

Our courses, activities and exams will be taught in English. Make sure that you will be able to pursue your study in English.

Test	Minimum score
iBT-TOEFL	61
CBT-TOEFL	173
Paper-based TOEFL	500
IELTS	5.0

# ENTRY REQUIREMENTS

## Eligibility

05



### Financial statement

**For self-funded applicants**, you must provide a financial statement within 3 months of the application time frame of at least USD 4,000 or TWD 120,000.

**For applicants with a sponsor**, if the financial statement is not in your name, a declaration with signature from the sponsor must be attached in your application, stating his/her relationship with you and guaranteeing the responsibility for all of your expenses in Taiwan.

**For full scholarship recipients**, you can provide scholarship certificate instead (scholarship application form will not be accepted). NSYSU scholarship information can be found at



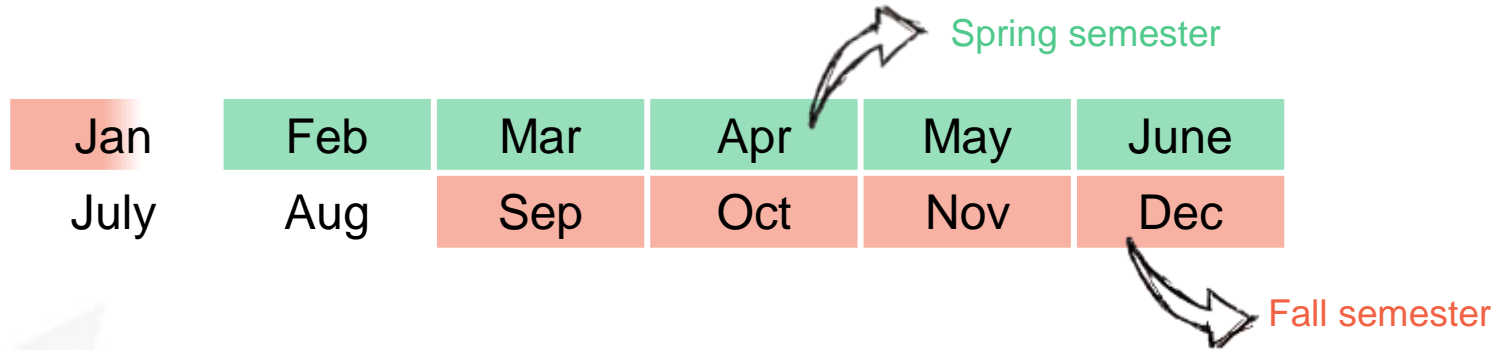


# STUDYING IN NSYSU

What you need to know about studying in NSYSU



# ACADEMIC YEAR



We have two semesters in one academic year.

The first / spring semester begins from February to June, and the second / fall semester begins from September to mid January.



# EXPENSES

International students' tuition fees and miscellaneous fees are combined together as tuition fees in their first two years of study. From their third year onwards, no matter you are a Master or PhD student, your payment will be separated into credit point fees and miscellaneous fees.

1st to 2nd year

<b>Master Program</b>	TWD 53,760 / semester (~USD 1,732)
<b>PhD Program</b>	TWD 53,760 / semester (~USD 1,732)

3rd year onwards (for both Doctoral and Master students)

	<b>Less than 10 CPs</b>	<b>From 10 CPs onwards</b>
<b>Credit Point (CP)</b>	TWD 3,140 (~USD 108) / CP	TWD 53,760 (~USD 1,732)
<b>Miscellaneous Fees</b>	TWD 22,360 (~USD 767)	

## Tuition Fees



# EXPENSES



## Accommodation

If you want to live on campus, we have a few options for you. You can stay in International Village, where 2 bed rooms are provided (see below).

International Village (2 bed room)	
One semester	TWD 17,000
Summer Break	TWD 8,600
Winter Break	TWD 4,300
Daily	TWD 300

Local Dormitory (4 bed room)	
One semester	TWD 8,500
Summer Break	TWD 4,300
Winter Break	TWD 2,100
Daily	TWD 150

However, you can also choose accommodation on budget by living in a Local Dormitory (see above).

During summer and winter breaks, you can also stay on our campus on the payment as listed in the tables.

# EXPENSES

## Food



Food in Kaohsiung is competitively cheap. You can easily purchase three simple meals (or four if you need more) for around TWD 200 per day.

Eateries, street stands and night markets are the common choices. Sometimes buying drinks at around TWD 40 to TWD 60 in a tea shop can be a highlight of your day!

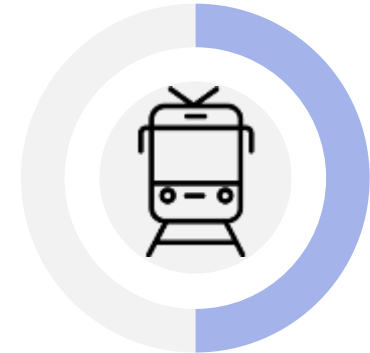
There are a number of transportation choices in Kaohsiung, including buses, taxis, the MRT, light rail, and rental bicycles or scooters.

Fees can vary greatly depending on how you travel. An EasyCard or iPass can be purchased and recharged at 7-Eleven or Family Mart.

More information about route and ticket fares can be found at:



## Transportation



# EXPENSES

## Insurance



You would need to buy general medical insurance for your first 6 months in Taiwan – which is TWD 3,000 (~USD 103). After staying for over 6 months, you would need to purchase National Health Insurance (NHI), which is priced at TWD 4,494 (~USD 154) every 6 months. Please contact our Office of International Affairs for more information.

You would need a sim card to survive in this technology era. Taiwan has three leading telecom companies: Chunghwa Telecom, Far Eastone and Taiwan Mobile. We suggest you to purchase a pre-paid plan to see which company you would prefer before buying a long term plan. More information about pre-paid plan can be found at



## Telecommunication



# SCHOLARSHIPS



There are some scholarships available in Taiwan.

Before applying for a scholarship, check out your eligibility, scholarship coverage, covering period and the valid application period.

You can apply for NSYSU scholarship while lodging your application for admission at IOA. Other external fundings are subject to their funding policy.





# NSYSU INTERNATIONAL SCHOLARSHIPS



You may apply for NSYSU International Scholarship while lodging your application to admission on the system of Office of International Office (OIA).

If you are a Master student, you can have your tuition fees waived for 2 years at maximum if your GPA is at least 3.38 in each semester.

If you are a PhD student, you can have your tuition fees (and possibly your on campus dormitory fees) waived for 3 years at maximum if your supervisor concludes on the Academic Advisor Consent Form that you are eligible to continue to receive the NSYSU scholarship. You may have NSYSU international scholarship and NSYSU Elite scholarship at the same time.

Please contact OIA for more information.

# NSYSU ELITE SCHOLARSHIPS



NSYSU Elite Scholarship application starts in the beginning each semester and target Doctoral students.

You may apply for NSYSU Elite Scholarship if your GPA is at least 3.5 in each semester.

This scholarship is open for application every semester and issues TWD 15,000 (~USD 496) per month. However, we only start to review the application in the beginning of a new semester and issue the scholarship around 2 months afterwards. In other words, there will be a gap between your application and the issuance. Get prepared to support your study and life during this window period.

Please contact Office of Academic Affairs for more information.





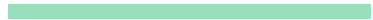
# MoFA SCHOLARSHIP

Ministry of Foreign Affairs (MoFA) offers degree scholarships. Check out the section of degree programs and you shall be able to find out the relevant information.

Degree program scholarship recipients would be funded TWD 30,000 per month and one way flight ticket to Taiwan.

The application date is usually from 1 February to 31 March every year.

See the eligibilities and application period on their website and contact them at [loicweng@mail.shu.edu.tw](mailto:loicweng@mail.shu.edu.tw) if you have any questions.





# MoE SCHOLARSHIP



Ministry of Education (MoE) offers monthly stipends of TWD 20,000.

The application date usually starts from 1 February to 31 March.

More information can be found on their website and please contact them at [yllau@mail.shu.edu.tw](mailto:yllau@mail.shu.edu.tw).





**START YOUR  
APPLICATION**

# PREPARE YOUR APPLICATION



## Mark out your calendar

Semester	Fall semester
<b>Application</b>	15 January 2020 – 31 March 2020
<b>Result announcement</b>	Before 15 June 2020
<b>Confirm the acceptance of offer letter</b>	Before 30 June 2020
<b>Confirm the acceptance of offer letter (for applicants on waiting list)</b>	Before 15 July 2020
<b>Enrolment</b>	Mid September 2020

# PREPARE YOUR APPLICATION



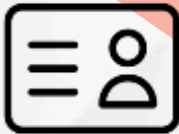
01



## Documents/information for academic review

- An autobiography in English.
- A video clip of self-introduction. Please upload it to Google Drive (or other cloud storage) and provide the link.
- A study Plan (including a research plan) in English.
- CV/Resume in English
- English proficiency test report card

02



## Documents of personal information

- Photocopy of your passport
- (1) Master program applicant: Bachelor's degree diploma  
(2) PhD program application: Bachelor's degree diploma and Master's degree diploma
- Transcripts
- Enrolment certificate is required if you are about to graduate yet still waiting for your diploma.
- Financial statement or scholarship certificate

# START YOUR APPLICATION



Please lodge your application at [Office of International Affairs \(OIA\)](#)

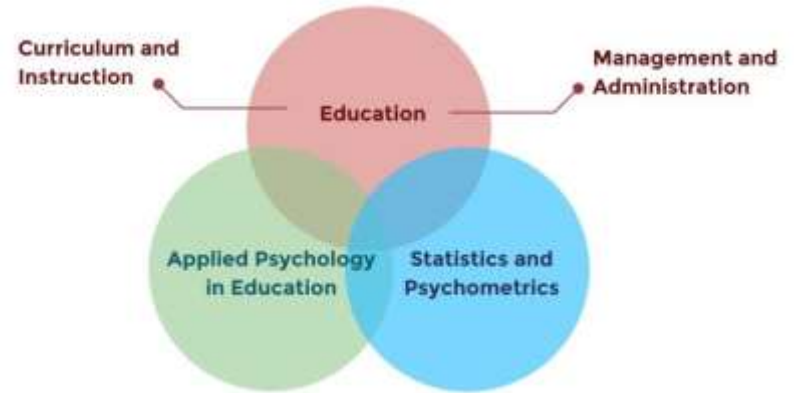


Welcome to ask any questions to our OIA at [ويا@mail.nsysu.edu.tw](mailto:ويا@mail.nsysu.edu.tw)

# PROGRAM OVERVIEW

Our M.A. program and Ph.D. Program feature three major areas, namely Education (subdivided into Curriculum & Instruction and Management & Administration), Applied Psychology in Education, and Statistics and Psychometrics.

Our courses address the interface of research and practice in education, weaving together theoretical models and concepts in their application to real world education issues.



# MASTER COURSE MAP

## REQUIRED COURSE - Research Methods

## ELECTIVE CORE METHODOLOGY COURSES

- Qualitative Research Method
- Studies in Educational Statistics

## MAJOR AREAS

### EDUCATION

- Informal Science Education
- Studies in Comparative Education
- Leadership Behavior
- Educational Gerontology
- Action Research in Mathematics Education
- Studies in Educational Administration
- Analyses on Educational Policy
- Higher Education Governance
- Teaching English to Speakers of Other Languages (TESOL)
- English as a Foreign Language (EFL) Teaching Practicum
- Multimedia Learning
- Higher Education Administration

### APPLIED PSYCHOLOGY IN EDUCATION

- Research on Multicultural Education
- Social and Personality Development
- Social Psychology
- Studies in Educational Psychology
- The Diffusion of Innovation
- Studies in Problem Solving
- Cognition and Mathematics Learning
- Analysis in Qualitative Research
- Research Method & Survey Methodology
- Studies in Anthropology of Education

### STATISTICS & PSYCHOMETRICS

- Research in Advanced Statistics in Education
- Multivariate Analysis
- Measurement in Education and the Social Science
- Item Response Theory
- Multidimensional Measurement
- Computerized Adaptive Testing
- Educational Measurement Data Analysis Using R
- Learning Analytics



# DOCTORAL COURSE MAP

## REQUIRED COURSE - Research Methods

## ELECTIVE CORE METHODOLOGY COURSES

- Qualitative Research Method
- Introduction to Measurement and Statistics

## MAJOR AREAS

### EDUCATION

- Education for Sustainable Development Research
- Scientific and Technology Literacy Studies
- Informal Science Education
- Studies in Comparative Education
- Leadership Behavior
- Educational Gerontology
- Action Research in Mathematics Education
- Contemporary Issues in Research on Organizational Behavior in Education
- Studies in Educational Administration
- Analyses on Educational Policy
- Higher Education Governance
- Teaching English to Speakers of Other Languages (TESOL)
- English as a Foreign Language (EFL) Teaching Practicum
- Multimedia Learning
- Higher Education Administration
- Studies in Sociology of Education

### APPLIED PSYCHOLOGY IN EDUCATION

- Research on Multicultural Education
- Social and Personality Development
- Social Psychology
- Studies in Educational Psychology
- The Diffusion of Innovation
- Studies in Problem Solving
- Cognition and Mathematics Learning
- Analysis in Qualitative Research
- Public Policy & Higher Education
- Research Method & Survey Methodology
- The Foundations of Institutional Research
- Introduction to Cultural Anthropology

### STATISTICS & PSYCHOMETRICS

- Research in Advanced Statistics in Education
- Multivariate Analysis
- Structural Equation Modeling (SEM)
- Measurement in Education and the Social Science Item Response Theory
- ARC Center Seminar in Measurement and Assessment
- Multidimensional Measurement
- Computerized Adaptive Testing
- Educational Measurement Data Analysis Using R
- Learning Analytics
- Mixed-methods Research



# STUDY WITH US!

Benefits of studying in IGPEHD, NSYSU

# ACADEMIC EVENTS



Being a student in IGPEHD, you will have chances to attend academic events, such as invited speeches or conferences.

Those events help broaden your horizons and let you make connections in the international research network.

Grasp the opportunities and join those events with us.

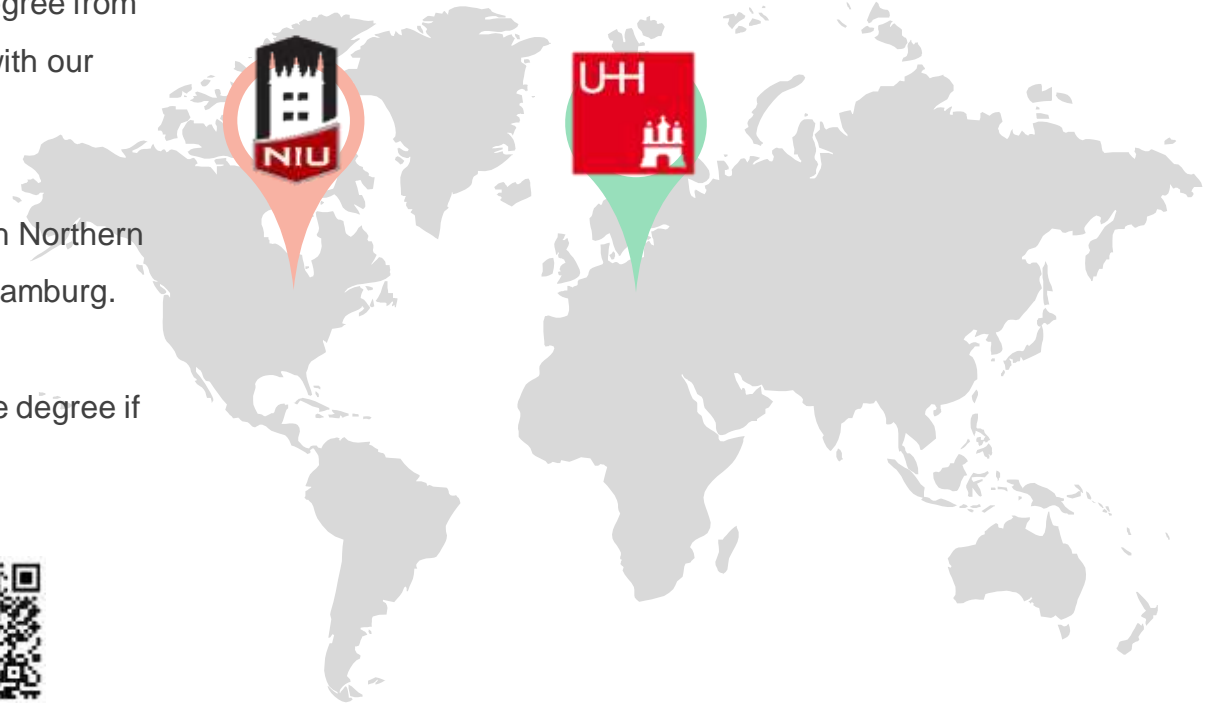
# DOUBLE DEGREE

You will have opportunities to obtain a degree from IGPEHD, coupling with another degree with our partners.

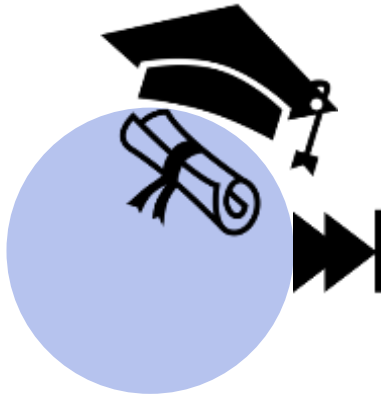
Currently IGPEHD is in a partnership with Northern Illinois University (NIU) and Universität Hamburg.

You will be eligible to apply for our double degree if you are our IGPEHD student.

More information can be found at



# FAST TRACK TO PHD



You will have an opportunity to be admitted to our Doctoral Program after studying in our Master Program for one year.

This would be fabulous if you would wish to further develop your academic career and have your research life full on.

More information can be found at



# WHY STUDY WITH US?

IGPEHD aspires to increase your global awareness and intercultural skills in this increasingly globalising environment, to expand your capacities in academic and research terms; and to increase your awareness of the importance of international education.



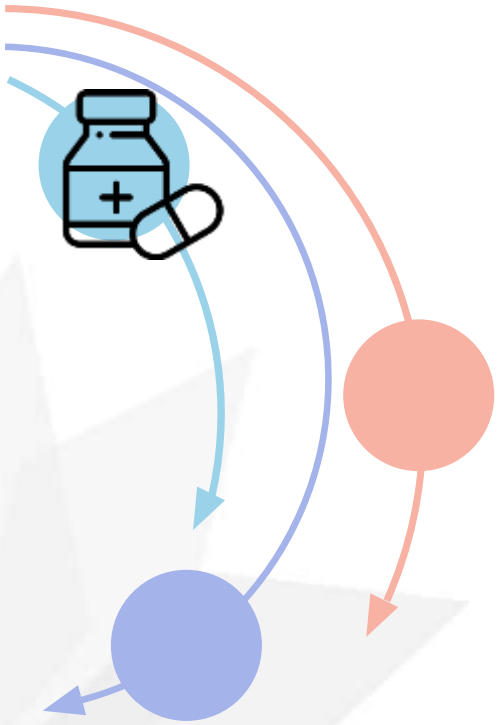
# WHY STUDY WITH US?

We help you build up a strong social capital via academic and research activities while you are studying in IGPEHD. You will learn the most up to date knowledge and practical skills in this fast changing educational landscape.

We have the quality faculty to teach you the useful knowledge and practical skills, which will equip you to face the future challenges in the field of education.



# WHY LIVING IN TAIWAN?



Taiwan's healthcare system, known as National Health Insurance (NHI), offers patients the healthcare services at a very competitive price.

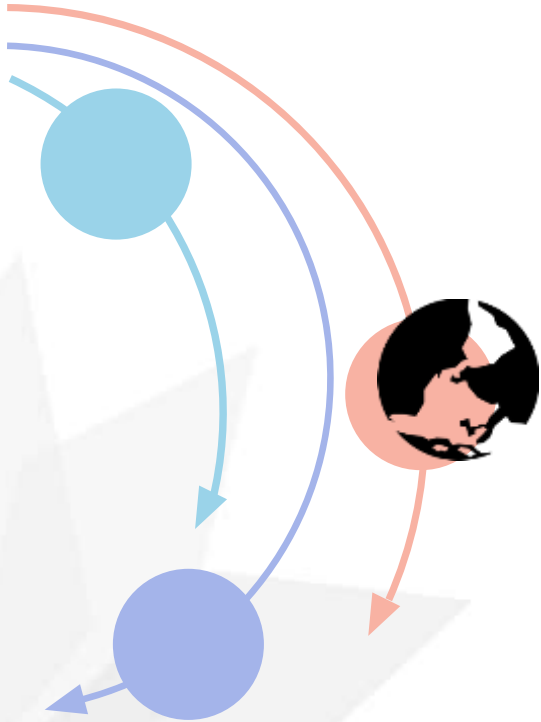
Living in Taiwan requires you to purchase medical insurance from NHI. The price is competitively at around USD 154 every 6 months.



# WHY LIVING IN TAIWAN?

NSYSU is receiving international students at an increasing rate. Currently NSYSU has around 9,000 students enrolled, among which about 900 international students are accounted for around 10% of the total population.

At NSYSU, you can enhance cross-cultural understanding and communication, expand your future career network, develop your leadership skills, increase knowledge of a different educational system, and have opportunities to collaborate on international research projects.



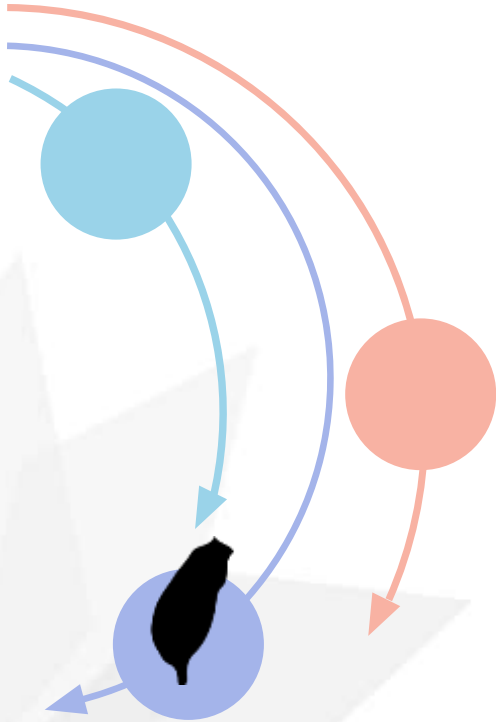
# WHY LIVING IN TAIWAN?



Last but not least, you will have further understanding of East Asian cultures, develop friendship through academic and research activities.

Definitely NSYSU is a perfect place where you can make international network, enjoy Taiwanese culture and celebrate your cultural heritage.

Come to study with us and we will see you soon.





**WELCOME TO VISIT US AT**



Or email us at [igpehd@g-mail.mail.nsysu.edu.tw](mailto:igpehd@g-mail.mail.nsysu.edu.tw)

